



## M400 Q012 shared use

# Operating instructions

### Content

### Page

General system description, Safety precautions.....	2
Care and maintenance, functional description, technical specifications .....	3
System components / Package contents, dimensions .....	4
Recessed version for internal reader .....	5
Displays and control elements, commissioning / battery change, battery warning .....	6
Initial programming Master-Card, closing and opening, non-authorized User-Card is rejected .....	7
Performing an emergency opening .....	8

More operating instructions can be found as a download on our internet page.

## GENERAL SYSTEM DESCRIPTION

The electronic locking system M400 is an electronic furniture lock. It is intended for usage in the home and office. Using the system in applications for which it is not intended may result in irreparable damage to it and render any claims null and void. These operating instructions provide information on how to properly install and operate the M400 system.

Wording and graphics have been prepared for you with care. However, no liability will be assumed for any mistakes that may have occurred. Copyright 2015 by LEHMANN Vertriebsgesellschaft mbH & Co. KG, D-32429 Minden. All rights reserved.

These instructions must not be reproduced in any way (print, photocopy, microfilm or other process) or processed, duplicated or distributed using electronic systems either in whole or in part without written consent from LEHMANN Vertriebsgesellschaft mbH & Co. KG, D-32429 Minden. The scope of items included by the manufacturer in the system as well as technical specifications are subject to change without notice.

## NOTE

- Our locks and locking systems can basically be used together with mechanisms made by other manufacturers, but their compatibility must be checked by the processor in each individual case.
- We cannot accept any liability for damage or losses due to incompatibility.

## SAFETY PRECAUTIONS

- When replacing the batteries, observe correct battery polarity and position!
- Dispose of used batteries properly!
- Do not heat batteries, take them apart or short-circuit them!
- Never throw batteries into open fire!
- The batteries must not be charged!
- Keep the batteries away from children!
- Any persons swallowing batteries must seek immediate medical advice!
- Damaged and/or leaking batteries may cause acid burns and/or poisoning!

## CARE AND MAINTENANCE

- Do not spill any liquid over or into the individual components of the system and never immerse the components in any liquid.
- The product should not be exposed to direct sunlight.
- Clean the system with a clean, soft, damp cloth only.
- Do not use any cleaning agents that contain abrasives or solvents like glass, thinners, alcohol, gasoline or ammonia, as these can damage the housing.
- Treating any of the electronic and mechanical components improperly or in any way other than described in this user manual may lead to malfunctions.

## FUNCTIONAL DESCRIPTION

**The RFID reader is not suitable for use on metallic surfaces.**

The M400 electronic locking system provides you with a convenient means of locking or unlocking your furniture electronically. The system is designed for the shared use application (free choice of cabinet). This means that users can only use one free cabinet (one free lock) at a time of their choice in the locking system. If a lock is closed with the User-Card, the User-Card and furniture lock are linked to each other. The card cannot be used at any other lock and the lock does not accept any other card. This link is only revoked once you reopen the cabinet (the lock) with your card. Each closed lock can be opened with the Master-Card. This will also delete the memory of the lock and previously authorised cards can no longer be used. The control electronics of the M400 system work independently, without cable connection to other control electronics and to the mains. For operation of the locking system you will additionally need a Master-Card, which you might already own or which you can purchase from your supplier or dealer.

**Once you have opened the lock with the Master-Card (memory of the lock is deleted), please use a new User-Card again.**

**Please store Master-Card away safely.**

## TECHNICAL SPECIFICATIONS

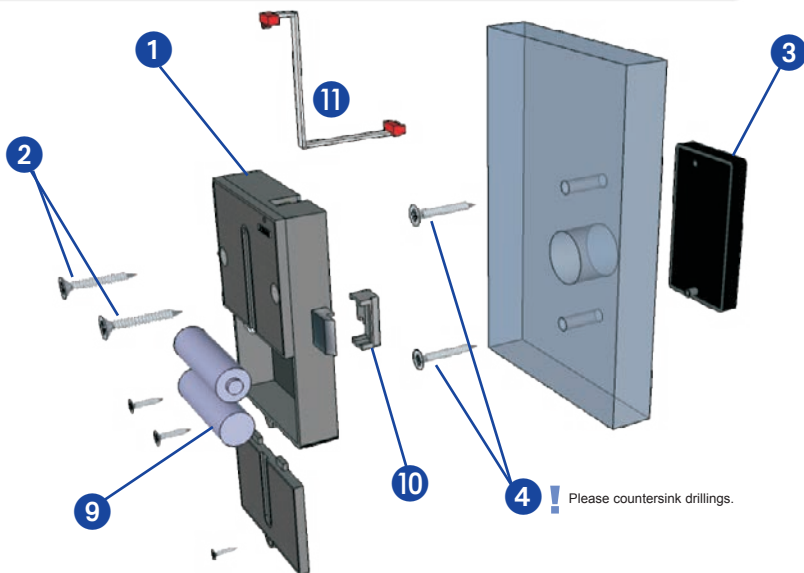
- Frequency: 125 kHz
- National legislation about permissible radio frequencies must be observed.
- Range: approx. 20 mm between reading unit and User-Card.
- Power supply for control electronics: Battery type: 2x AA, alkaline 1.5V.
- NiCd, NiMH or other rechargeable batteries as well as zinc-carbon or lithium batteries must not be used!
- The lock (shared use version) is operated with **pre-programmed** Hitag2 cards.

### Temperature range:

**Operation:** +5°C to +40°C at 30% to 80% relative humidity, non-condensing.

**In storage:** -25°C to +70°C at 30% to 80% relative humidity, non-condensing.

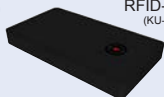
## SYSTEM COMPONENTS / PACKAGE CONTENTS



**1** M400 RIFD Q011 furniture lock



**3** RFID-reader (KU-black)



**4** 2 x thermo-plastic screw 3x20



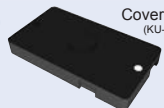
**9** 2 x 1,5V AA



Operating instructions



**5** Covering cap (KU-black)



**6** 2 x Spax 3x13



**10** Protector



**2** 2x Spax 3x30, 3x Spax 3x13



**7** Striker plate



**8** 3 x Spax 3x13

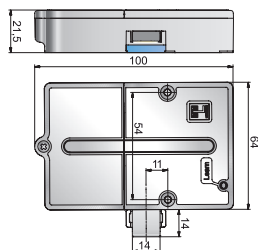


**11** Connection cable 100 mm

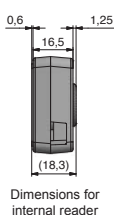
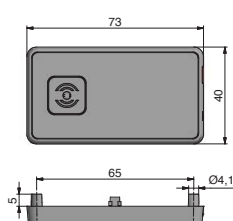


## DIMENSIONS

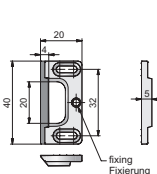
M400 RIFD Electronics



RIFD reader



Striker plate



## RECESSED VERSION FOR INTERNAL READER

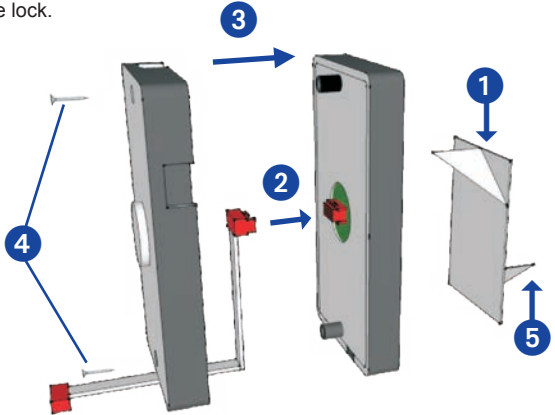
Alternatively to standard mounting of the reading unit at the front of the furniture, the reader can also be mounted on the inside. Please note that the reading range is limited in this case and light signals are no longer visible.

**The external reader can be supplied with power in an emergency.**

**Please note that this does not apply to the internal reader.**

Mount the lock and connect the cable with the lock.

- 1 Remove the protective film of the adhesive tape on one side and stick the adhesive tape to the front of the reader.
- 2 Connect the connecting cable and lay in direction of the cable outlet.
- 3 Press both housing halves together. Make sure that cable is not jammed or damaged.
- 4 Hand-tighten both housing screws 2x Spax 3x13.
- 5 Remove the protective film at the rear.

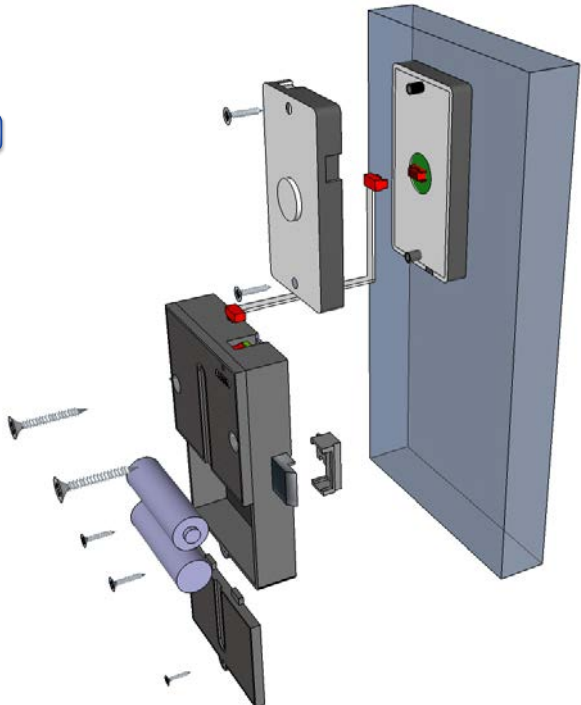


Then stick the complete reading unit to the inside of the door.

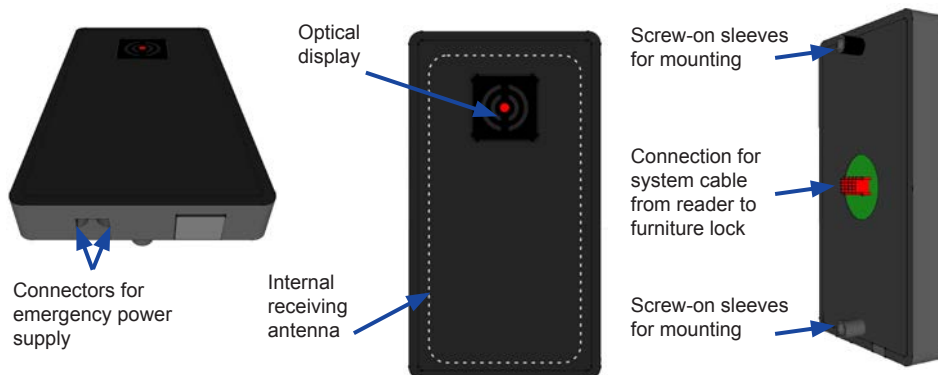
### NOTE

**!** The surfaces to be covered must be clean, dry and grease-free to ensure a secure hold.

Works for wood thicknesses of max. 20 mm.



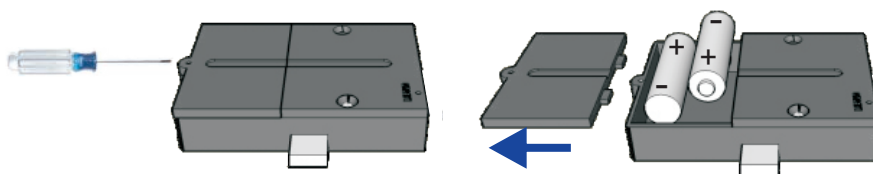
## DISPLAYS AND CONTROL ELEMENTS



## GETTING STARTED / CHANGING BATTERIES

Before installing the system, insert the batteries in the control electronics and program the furniture lock according to these instructions. Once the programming operation is completed, ensure proper functioning of the system.

- 1** Remove screw. Open the battery compartment lid.
- 2** Insert / replace the batteries.
- 3** Close the battery compartment lid. **Fit the fixing screw.**



**Only install the furniture lock in the furniture when it is unlocked.**

Use only **LR6, AA, alkaline** type batteries. Make sure that the polarity is correct!

**Rechargeable batteries, zinc-carbon batteries or lithium batteries are not permitted!**

## BATTERY WARNING

Warning level	Signals	Function (after reading in of cards)	Measure
<b>Level 1</b>	2x red light signal each and acoustic signal after each lock movement	Normal locking function	Batteries are almost exhausted and should be replaced soon.
<b>Level 2</b>	3x red light signal and acoustic signal after each opening	The lock opens and cannot be closed again.	Batteries are exhausted and must be replaced.

## INITIAL PROGRAMMING MASTER-CARD

The furniture lock is supplied neutrally and only enabled after teaching in of a Master-Card. So a functional check only becomes possible when the following programming operation is complete. A LEHMANN Master-Card is required for initial programming.

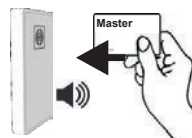
Insert the batteries in the battery compartment in the correct position. Connect the reader to the lock. Ensure correct contacting and wait until an acoustic and optical signal is issued.

*The reader is ready for operation and is waiting for the Master-Card.*



**Hold the Master-Card in front of the reader.**

*The display light goes off. The system is ready for operation.*



## CLOSING AND OPENING

**Close - Hold the User-Card in front of the reader until a red light signal appears and the acoustic signal sounds.**

*If a red light signal appears and an acoustic signal sounds, the card is accepted and the furniture lock closes.*

The User-Card is now firmly linked to the furniture lock and cannot be used at any other lock until this lock is opened. The lock also does not accept any other User-Card.



**Open - Hold the User-Card in front of the reader until a green light signal appears and the acoustic signal sounds.**

*If a green light signal appears and an acoustic signal sounds, the card is authorised and the furniture lock opens.*

The link between card and lock was revoked. The card can be used for another lock. The lock is available for a different user.



## NON-AUTHORISED USER-CARD IS REJECTED

**In case of a closed lock**

*If an unauthorised card is held in front of the reader when the lock is closed, two red light signals appear and two acoustic signals sound. The card was rejected. The lock does not perform an action.*



## PERFORMING AN EMERGENCY OPENING

In case the User-Card has been lost, an emergency opening can be performed with the Master-Card. After that, the lock returns to a normal, neutral operating state. The previously valid User-Card was deleted and can no longer be used. Please use a new User-Card.

**Hold the Master-Card in front of the reader to perform the emergency opening.**

*An acoustic signal is issued and the display flashes green once. The furniture lock opens.*



**LEHMANN Vertriebsgesellschaft mbH & Co. KG**  
Postfach 26 20 • D-32383 Minden  
Fon +49 571/50 599-0 • Fax +49 571/50 599-822  
[info@lehmann-locks.com](mailto:info@lehmann-locks.com) • [www.lehmann-locks.com](http://www.lehmann-locks.com)  
DIN EN ISO 9001:2008 certified